

Malheur National Forest Reduces South Area Closure

Release Date: Aug 13, 2024

Contact: Amy Franklin (541) 620-3365

SM.FS.malpubinfo@usda.gov

www.fs.usda.gov/malheur

X: [@MalheurNF](https://twitter.com/MalheurNF)

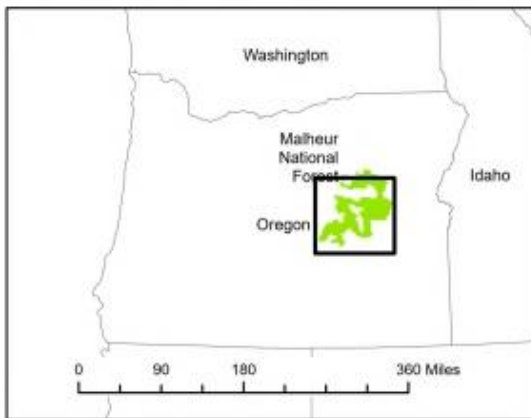
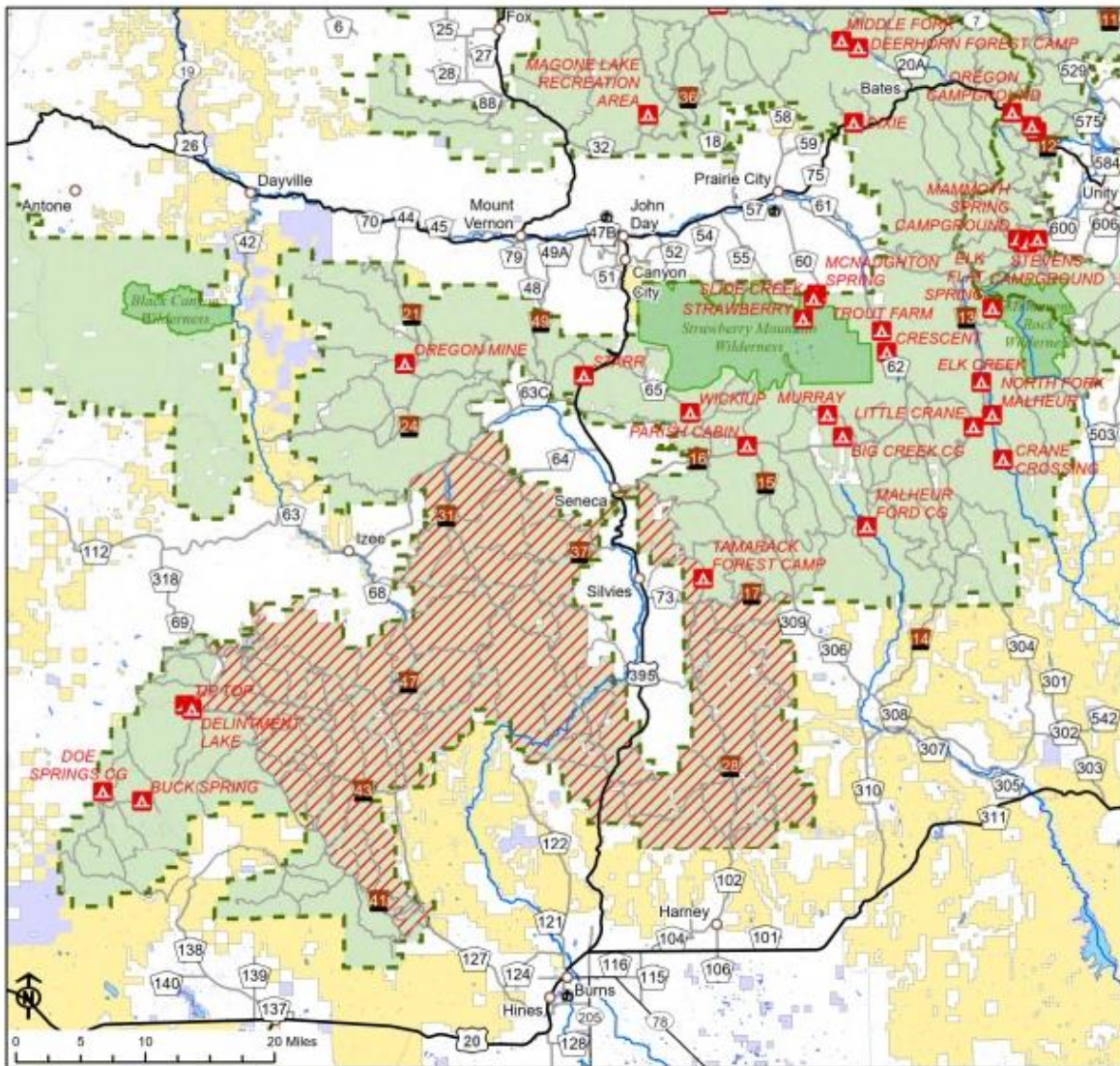
Facebook: www.facebook.com/MalheurNationalForest

The Malheur National Forest has reduced the South Area Closure, once more. Due to control and containment measures the Malheur National Forest is reducing portions of the forest previously under the South Area Closure #2. However, to continue protecting public health and safety, fire managers will maintain a portion of the southern part of the forest under closure due to fire activity and fire suppression operations. This closure will be effective August 13, 2024, through December 31, 2024, unless fire situations warrant rescission sooner. This Forest Order rescinds and replaces the previous southern area closure #2 (06-04-00-24-19). This reduction of the South Area Closure will open Malheur National Forest west of the Forest Service Road 4100, including Delintment Lake and campground. .

Closure Area Description:

- Grant County Road 63 following the National Forest boundary to Highway 395C, south of Seneca.
- Highway 395C south of Seneca following the National Forest Boundary to Forest Service Road 1600 to the Forest Service Road 1601.
- Following Forest Service Road 1601 southeast to the intersection of Forest Service Road 1700.
- Following Forest Service Road 1700 to the intersection of Forest Service Road 1500.
- Following Forest Service Road 1500 to the Malheur National Forest Service Boundary.
- Follow the southern portion of the Emigrant Creek Ranger District around to Forest Service Road 4100.
- Follow Forest Service Road 4100 to the National Forest boundary.
- Follow the National Forest boundary to Grant County Road 63.

A detailed map of the closure is included.



**Malheur National Forest
South Area Closure #3
Exhibit A
Closure Number 06-04-00-24-20**

- Legend
- Area Closure
 - Open Campground
 - National Forest Land
 - Bureau of Land Management
 - Bureau of Indian Affairs
 - National Park Service
 - Other Federal Land
 - State Land
 - Other Land, Including Private

